

Open Front V2 Blocks assembly

Suivi des évolutions

Indice	Date	Description de l'évolution	Auteur
0.0	03/10/2022	Création	FBR

BOM :

Printed parts mandatory

Mainbody	X2 L+R
----------	--------

Printed parts optionnal

Base plate	X2 L+R
SFU1605 Plate	X2 L+R
SFU1204 Plate	X2 L+R
SFU Cache	X2 L+R
Ratrig retainer arm stock	X2 L+R

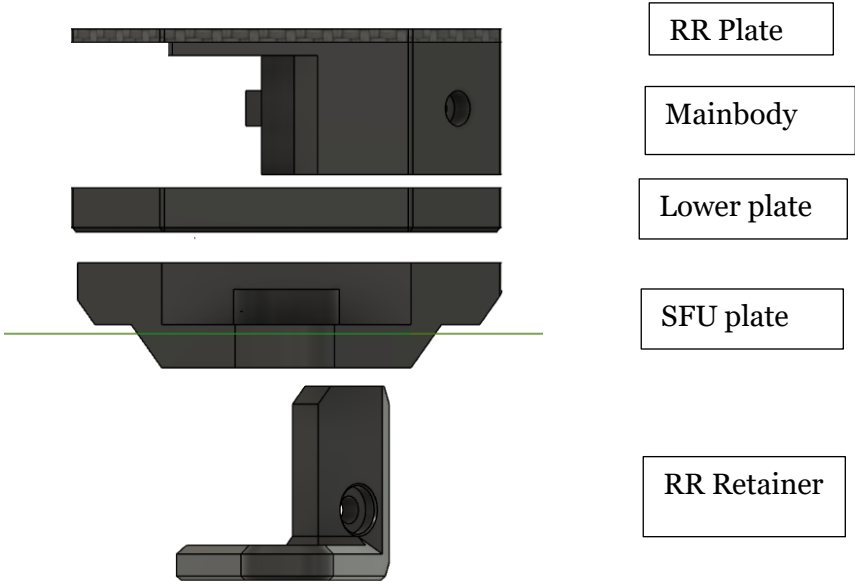
Hardware :

M6 Inserts	X8
M3 Inserts	X2
M4 Inserts	X2
M2 inserts	X4
M2x8	X4
35mm Shoulderbolt	X2
8x5x1mm shim	X6
Ratrig idler plate (Al or CF)	X2 / X4*

	Open Front V2 Blocks Assembly	BRS-Engineering
--	--------------------------------------	-----------------

M6x14mm	X16
M3x40	X2

Parts explanation



In this assembly you can use EITHER, 2 RR idlers plate around the Mainbody

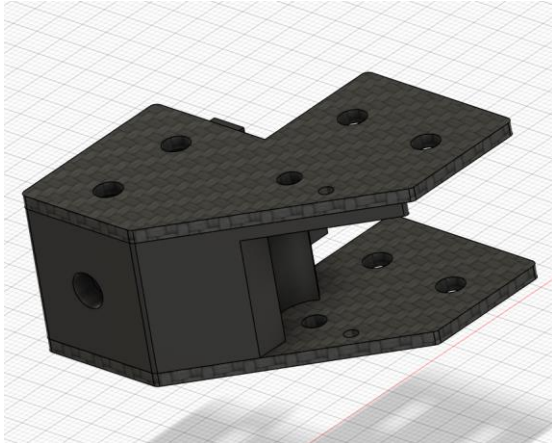
OR 1 plate with the Lower plate printed

OR 1 plate with the SFU adaptor

OR 1 plate with the RR stock retainer

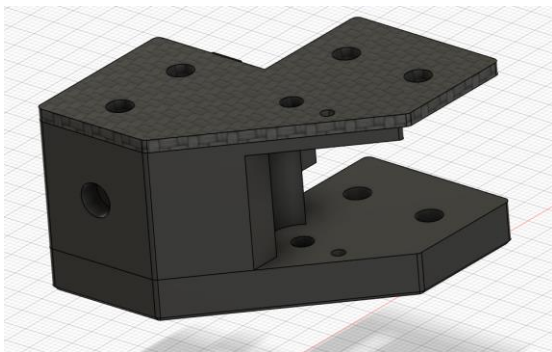
Dual plate assembly

Can be used with the RR retainer

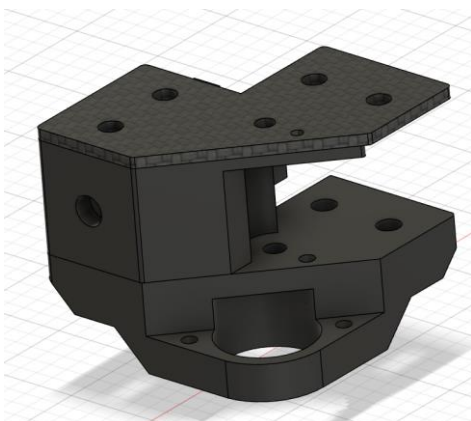


Dual plate printed

Can be used with RR retainer

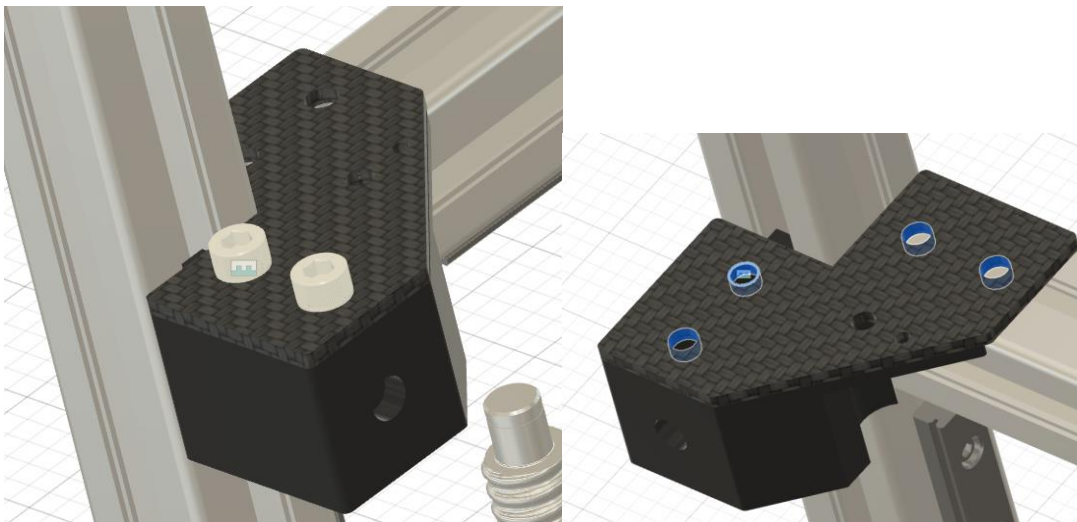
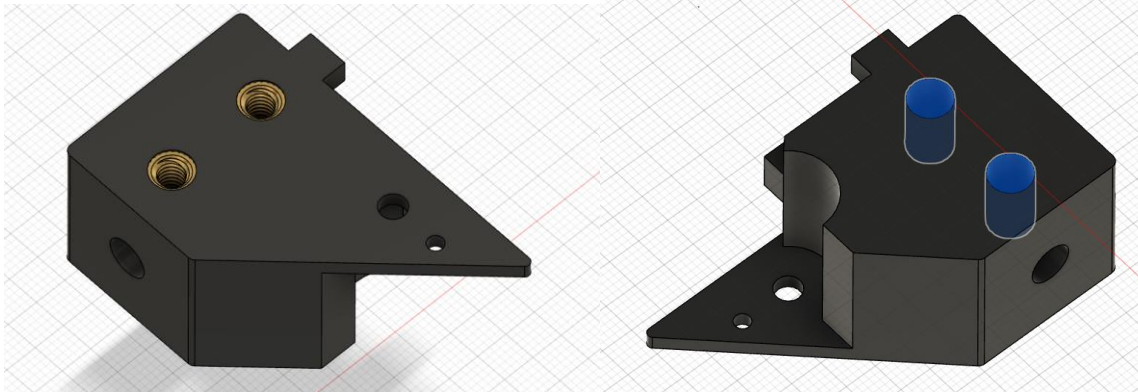


SFU plate

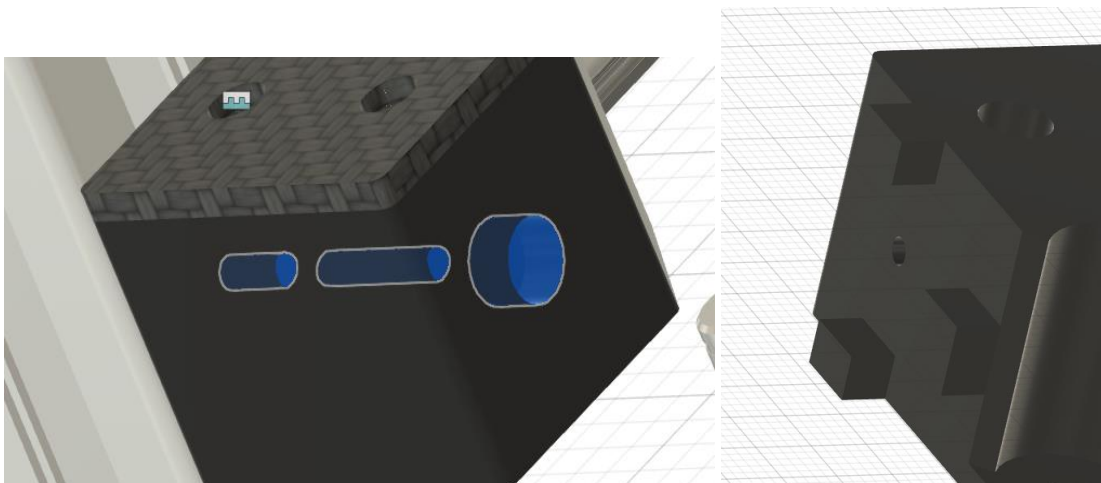


Mainbody

Each block contain 8 position to insert a total of 8x M6 Heat inserts



M6 screws are here to secure the plate to the part and the frame, put m6 washers for them



Don't forget the m3x40mm crew with the m3 t-nut to completely lock the part in place. You will see some notches that will match the 3030 profil to add stability and positioning

Once this preassembly is made, you are free to add the lower part you need depending your setup:

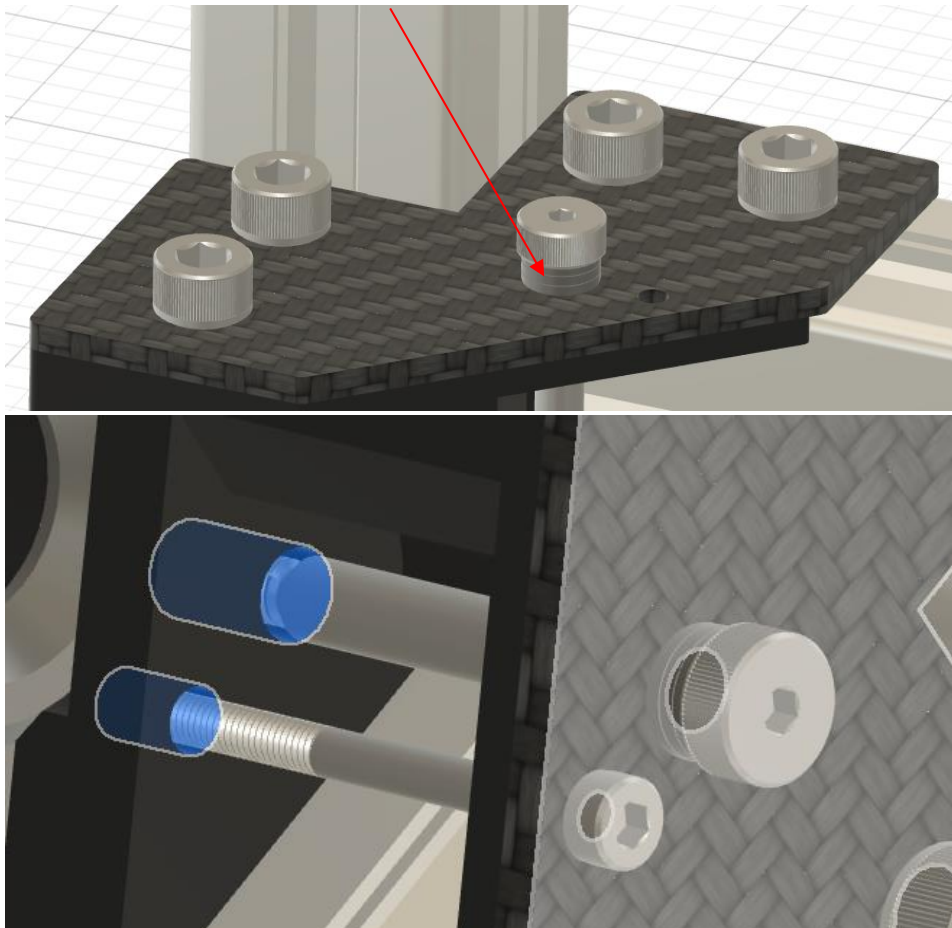
- Another RR plate
- An SFU plate
- An printed plate for convenience

Adding the idler and the shaft

Use a 35mm shoulder bolt to install the idler, here is the same principle of the RR manual for it

Same bearing staking order

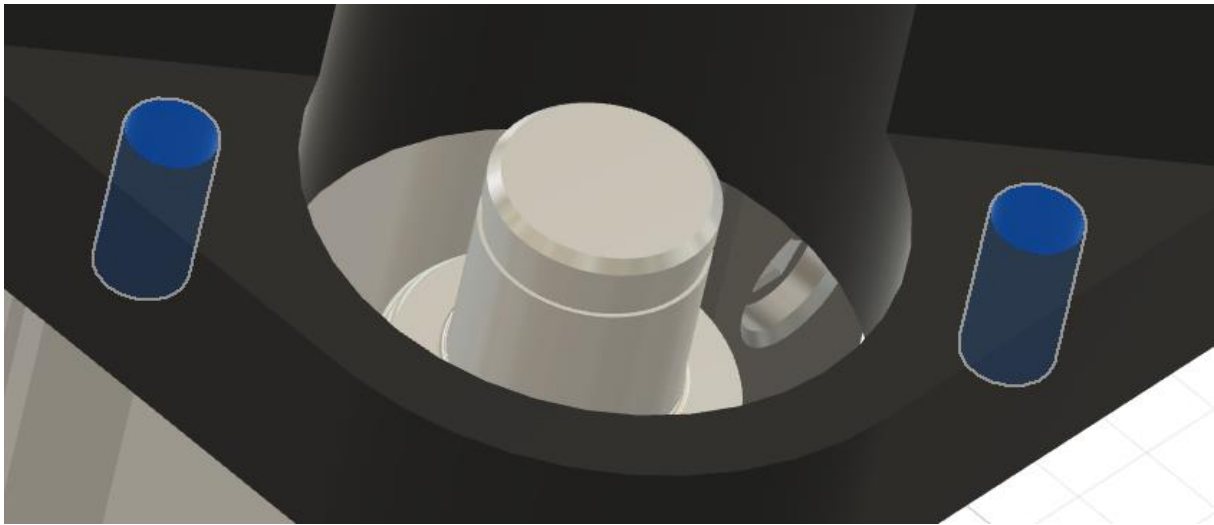
For the printed plate/SFU plate, an M4 and M3 insert is needed to hold the Shoulder bolt, don't forget to put shims (3) on the top plate to adjust it.



For the second RR plate assembly, use a nyloc m4 to secure the shoulder bold (don't put the shim)

The last m3x40 isnt mandatory, it just lock the plates together.

For the SFU plates, 2 m2 inserts need to be placed here to fix the SFU rerainer (Same principle than the Z upgrade use to explain)



Then put 2 m2x8mm screw to fix the top part

